

BRITISH VIRGIN ISLANDS

TOURISM HIGHLIGHTS FOR 2007

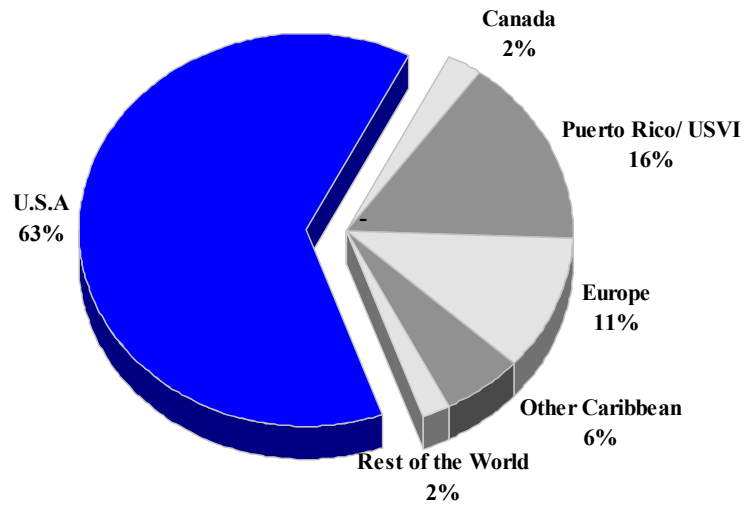
VISITOR ARRIVALS			
Tourist Arrivals → *	358,056	Cruise Passengers *	575,211
↳ <i>Summer</i>	57.9%	↳ <i>Summer</i>	50.0%
↳ <i>Winter</i>	42.1%	↳ <i>Winter</i>	50.0%
Same day visitors	15158	Cruise Ship calls	n.a
VISITOR PROFILE			
Average Length of Stay (<i>nights</i>) ^{II}	9.3	Tourist Arrivals by Place of Stay^{II}	
Tourist Arrivals by Purpose of Visit^{IV}		↳ <i>Hotels</i>	28.0%
↳ <i>Holiday</i>	96.3%	↳ <i>Charter Boats</i>	55.1%
↳ <i>Business</i>	1.9%	↳ <i>Private</i>	9.2%
↳ <i>Other</i>	1.8%	↳ <i>Other Accommodation</i>	7.7%
TOURISM AND OTHER RELATED ECONOMIC STATISTICS			
Visitor Expenditure (<i>US\$ millions</i>) ^{II}	\$436.7	Tourism Budget (<i>US\$ thousands</i>) ^{IV}	\$4,115
Hotel and Restaurant contribution to GDP ^{IV}	16.0%	GDP at Factor Cost (<i>US\$ millions</i>) ^{III}	\$879.0
		Consumer Price Index (<i>%ch. 2005/'04</i>)	2.0%
ACCOMMODATION STATISTICS		SOCIO-ECONOMIC STATISTICS	
Rooms ^{II}	1,770	Land Area (<i>square Kilometres</i>)	150
Room Occupancy Rates ^{*II}	82.5%	Population (<i>thousand mid year 2006</i>)	26.7

* Development Planning Unit estimate

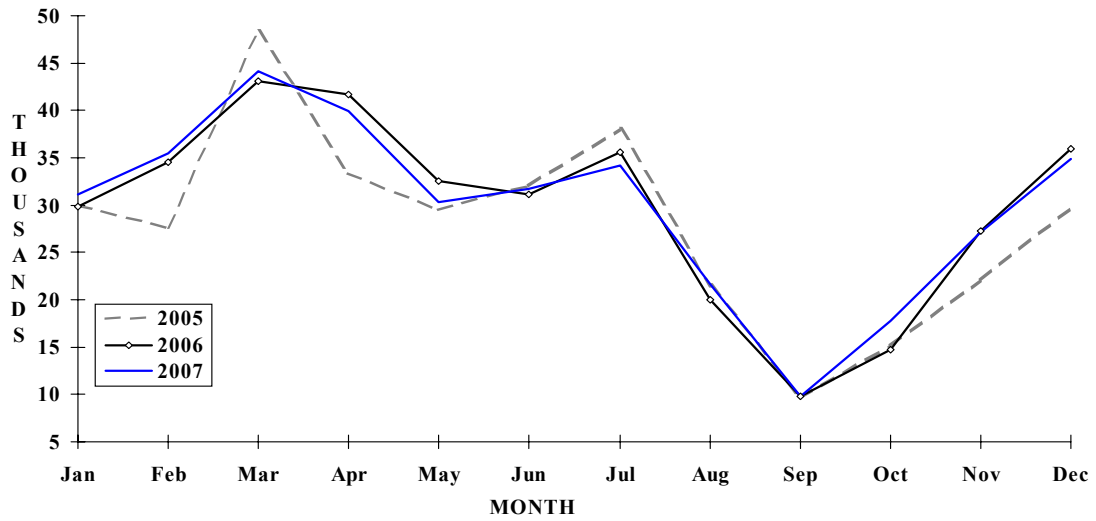
BRITISH VIRGIN ISLANDS

TOURIST ARRIVALS BY MAIN MARKETS

2007^e



MONTHLY TOURIST ARRIVALS



BRITISH VIRGIN ISLANDS

TOURIST ARRIVALS BY COUNTRY OF RESIDENCE

Country of Residence	1998	1999	2000	2001	% Share	
					2002	2002
United States	159985	170229	173225	184408	179876	63.9
Canada	6815	6837	8468	7394	6307	2.2
Europe	31488	32614	38619	33616	28765	10.2
Puerto Rico/USVI	41730	45850	41165	46780	45012	16.0
Other Caribbean	11479	13127	13415	16882	17417	6.2
South America	3171	2392	2632	2500	1276	0.5
Other	24429	14809	3595	4045	3043	1.1
TOTAL	279097	285858	281119	295625	281696	100.0

MONTHLY TOURIST ARRIVALS

Month	2003	2004	2005	2006	% Change	
					2007	2007/06
January	28776	28522	30004	29849	31158	4.4
February	37648	28974	27564	34533	35457	2.7
March	37972	30931	48315	43140	44096	2.2
April	36660	35115	33341	41703	39965	-4.2
May	26166	28402	29510	32486	30262	-6.8
June	24769	25977	32057	31171	31699	1.7
July	28275	32895	38047	35565	34214	-3.8
August	19180	16012	21518	20027	21605	7.9
September	6587	8400	9725	9815	9755	-0.6
October	14627	15713	15137	14725	17747	20.5
November	22772	23007	22146	27320	27168	-0.6
December	34326	30570	29771	35937	34930	-2.8
TOTAL	317758	304518	337135	356271	358056	0.5

BRITISH VIRGIN ISLANDS

TOURIST ARRIVALS BY TYPE OF ACCOMMODATION

Place of Stay	2001	2002	2003	2004	% Share	
					2005	2005
Hotel	73714	57790	60299	85096	94447	28.0
Rented Accom.	19757	22740	23691	27549	30576	9.1
Own Home/Friends	21612	24160	21517	23727	26331	7.8
Charter Boats	180542	177005	212251	167384	185778	55.1
TOTAL	295625	281695	317758	303756	337132	100.0

CRUISE PASSENGER ARRIVALS

Month	2003	2004	2005	2006	% Change	
					2007	2007/06
January	37185	72546	67886	98315	79872	-18.8
February	38214	63665	60291	67262	78444	16.6
March	49338	72994	63043	64620	80467	24.5
April	42833	44111	40194	50971	48983	-3.9
May	7059	16922	15558	13534	23602	74.4
June	11544	13056	13754	11823	17921	51.6
July	7510	14383	14440	12643	18701	47.9
August	12620	11088	14366	15226	19242	26.4
September	2875	11411	10492	10792	12176	12.8
October	17342	20658	29092	22966	22487	-2.1
November	37879	52273	52009	43478	70848	63.0
December	39939	73494	68027	62357	102468	64.3
Total	304338	466601	449152	473987	575211	21.4
Cruise ship calls	367	447	407	398	n.a	
Charter yachts	863	869	n.a	n.a	n.a	

TOURIST ACCOMMODATION (Rooms on land)

Area	2002	2003	2004	2005
Hotels	1314	1318	1370	1180
Guest Houses/Apartments	493	497	499	590
TOTAL	1807	1815	1869	1770

Source: Development Planning Unit - British Virgin Islands

CAYMAN ISLANDS

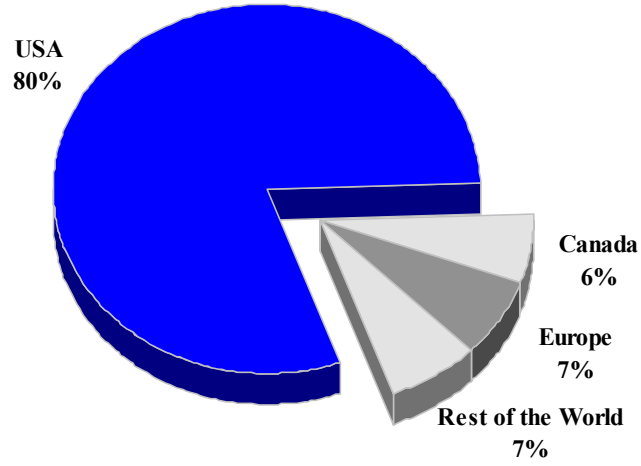
TOURISM HIGHLIGHTS FOR 2007

VISITOR ARRIVALS			
Tourist Arrivals ➔	291,503	Cruise Passengers	1,715,666
➔ <i>Summer</i>	61.0%	➔ <i>Summer</i>	56.0%
➔ <i>Winter</i>	39.0%	➔ <i>Winter</i>	44.0%
		Cruise Ship calls	657
VISITOR PROFILE			
Average Length of Stay (<i>nights</i>) ^I	6.6	Tourist Arrivals by Place of Stay	
Tourist Arrivals by Purpose of Visit		➔ <i>Hotels</i>	36.8%
➔ <i>Holiday</i>	82.5%	➔ <i>Guest Houses/Apartments</i>	20.5%
➔ <i>Business</i>	7.2%	➔ <i>Private homes</i>	15.6%
➔ <i>Other</i>	10.3%	➔ <i>Other</i>	27.1%
TOURISM AND OTHER RELATED ECONOMIC STATISTICS			
Visitor Expenditure (<i>US\$ millions</i>) ^I	\$508.8	GDP at Market Prices (<i>US\$ millions</i>) ^I	\$2,040.0
Tourism Budget (<i>US\$ thousands</i>) ^V	\$21,487	Consumer Price Index (% <i>ch.</i> 2004/'03)	4.4%
ACCOMMODATION STATISTICS		SOCIO-ECONOMIC STATISTICS	
Rooms ^{IV}	5,127	Land Area (<i>square Kilometres</i>)	260
Room Occupancy Rates - <i>Hotel</i>	61.8%	Population (<i>thousand mid year 2006</i>)	52.0
- <i>Non-hotel</i> **	41.5%		

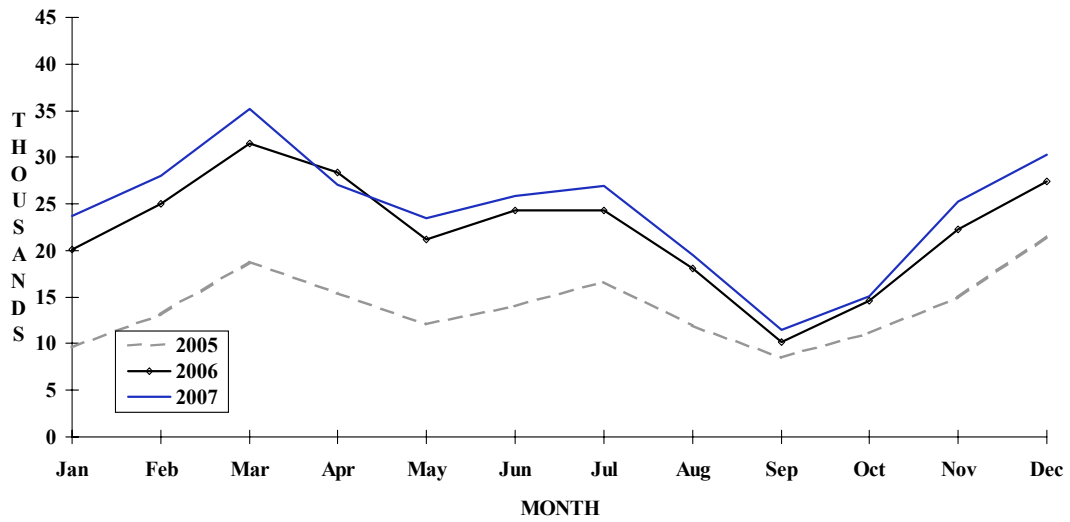
** Includes apartments, condos, guesthouses, villas and bed & breakfast accommodations.

CAYMAN ISLANDS

TOURIST ARRIVALS BY MAIN MARKETS 2007



MONTHLY TOURIST ARRIVALS



CAYMAN ISLANDS

TOURIST ARRIVALS BY COUNTRY OF RESIDENCE

Country of Residence	2003	2004	2005	2006	% Share	
					2007	2007
United States	232413	205206	118843	217364	231865	79.5
Canada	14125	12116	10480	14910	17355	6.0
United Kingdom	14115	12182	9991	12788	15206	5.2
Other Europe	4099	3095	2725	4622	5149	1.8
Jamaica	18639	18306	17005	7610	10262	3.5
Other Caribbean *	3261	3231	3211	3750	4631	1.6
Rest of World	6863	5793	5546	6214	7035	2.4
TOTAL	293515	259929	167801	267258	291503	100.0

* Includes Costa Rica

MONTHLY TOURIST ARRIVALS

Month	2003	2004	2005	2006	% Change	
					2007	2007/06
January	24725	25689	9601	20163	23726	17.7
February	28270	32022	13202	25004	27947	11.8
March	34421	3248	18810	31493	35146	11.6
April	27807	33903	15423	28403	27003	-4.9
May	20909	25502	12061	21172	23427	10.7
June	24662	26890	14008	24251	25837	6.5
July	26491	33118	16610	24256	26895	10.9
August	22422	23191	11917	18064	19481	7.8
September	11336	4982	8494	10155	11457	12.8
October	18879	1968	11104	14634	15102	3.2
November	22745	4215	14979	22276	25227	13.2
December	30848	11201	21592	27386	30255	10.5
TOTAL	293515	225929	167801	267257	291503	9.1

CRUISE PASSENGER ARRIVALS

Month	2003	2004	2005	2006	2007	% Change 2007/06
January	180915	207411	170961	211678	224880	6.2
February	171848	192840	201761	180675	203734	12.8
March	171629	230840	252586	253124	217690	-14.0
April	178249	190631	166289	182790	170239	-6.9
May	111645	118514	126530	112374	130555	16.2
June	116292	128390	110633	112190	95966	-14.5
July	132933	122967	86539	122781	109196	-11.1
August	111875	119367	122562	144179	99753	-30.8
September	113258	41596	118466	110971	69802	-37.1
October	159589	0	65651	128754	94588	-26.5
November	163955	149456	176587	160373	137234	-14.4
December	206791	191281	200434	210247	162029	-22.9
TOTAL	1818979	1693293	1798999	1930136	1715666	-11.1
Cruise ship calls	830	732	784	802	657	

TOURIST ACCOMMODATION (Rooms)

Type of Accommodation	1999	2000	2001	2002	2003
Hotels	1977	2815	2844	2712	2473
Apts./Cottages	2341	-	-	-	-
Guest Houses	-	-	-	-	-
Other	-	2549	2650	2526	2635
TOTAL	4318	5364	5494	5238	5108

* Closure of Holiday Inn and conversion of Royal Pavilion to office use were mainly responsible for room reduction in 1998

** Includes Apartments, Guesthouses, Villas & Condos

Source: Department of Tourism, Cayman Islands

CUBA

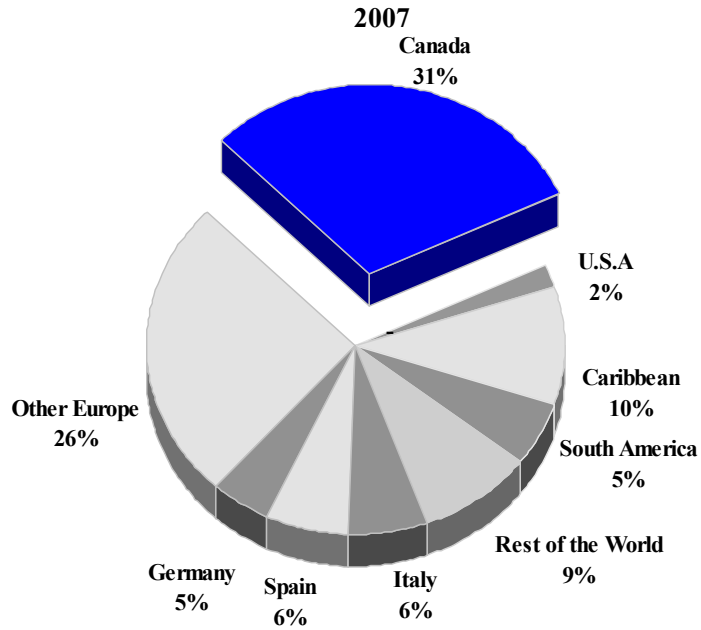
TOURISM HIGHLIGHTS FOR 2007

VISITOR ARRIVALS			
Tourist Arrivals ✈ ➔ Summer ➔ Winter	2,152,221 58.4% 41.6%	Cruise Passengers	<u>NOT AVAILABLE</u>
VISITOR PROFILE			
Average Length of Stay (<i>nights</i>) ¹	10.5	Tourist Arrivals by Purpose of Visit ➔ <i>Holiday</i> ➔ <i>Business</i> ➔ <i>Other</i>	93.8% 0.6% 5.6%
TOURISM AND OTHER RELATED ECONOMIC STATISTICS			
Total Expenditure (<i>US\$ millions</i>) ¹	\$2,404.0	GDP at Factor Cost (<i>US\$ millions</i>) ¹¹ # Hotel and Restaurant contribution to GDP ¹¹	\$28,393.1 28.8%
ACCOMMODATION STATISTICS		SOCIO-ECONOMIC STATISTICS	
Rooms Room Occupancy Rates	47,103 60.9%	Land Area (<i>square Kilometres</i>) Population (<i>thousand mid year 2006</i>)	110,860 11,241.4

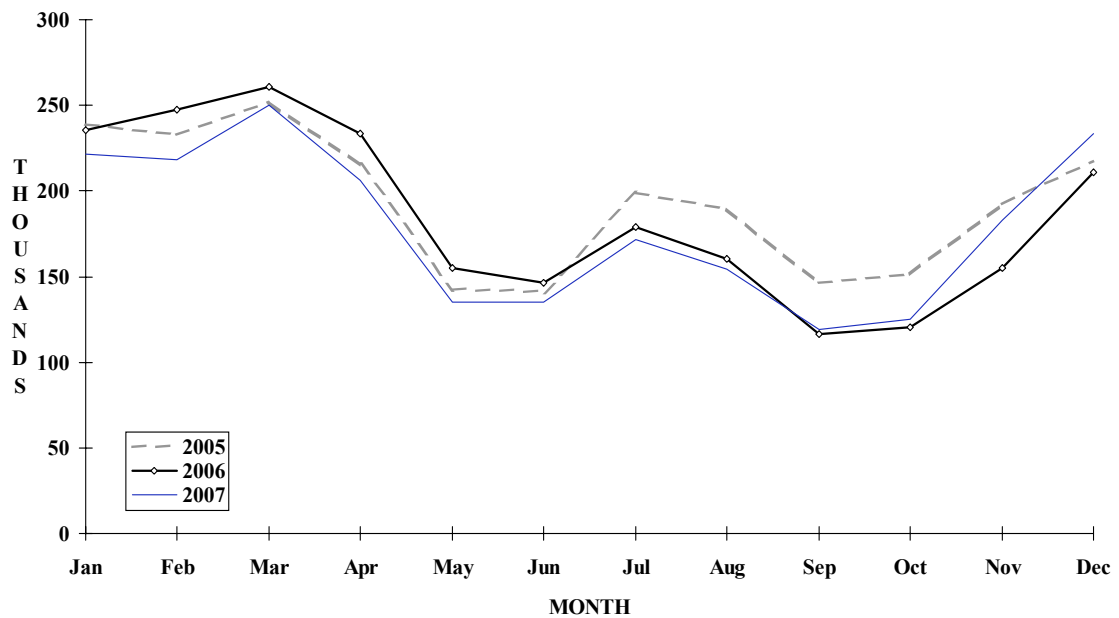
[#] Figure used is Gross Social Product

CUBA

TOURIST ARRIVALS BY MAIN MARKETS



MONTHLY TOURIST ARRIVALS



CUBA

TOURIST ARRIVALS BY COUNTRY OF RESIDENCE*

Country of Residence	2003	2004	2005	2006	2007	% Share 2007
United States	84529	49856	37233	36808	40521	1.9
Canada	452438	563371	602377	604263	660384	30.7
Italy	177627	178570	169317	144249	134289	6.2
Spain	127666	146236	194103	185531	133149	6.2
Germany	157721	143644	124527	114292	103054	4.8
Other Europe	479038	508277	559722	569201	553533	25.7
South America	78831	163206	280827	186140	117225	5.4
Caribbean	191594	144861	176455	187577	215303	10.0
Other	156238	150551	174773	192506	194763	9.0
Total	1905682	2048572	2319334	2220567	2152221	100.0

* Includes same-day visitors

° Includes Central America

MONTHLY TOURIST ARRIVALS

Month	2003	2004	2005	2006	2007	% Change 2007/06
January	190669	215727	238729	235500	221226	-6.1
February	191650	223946	232938	247475	217908	-11.9
March	212441	229905	252009	260446	250404	-3.9
April	179104	194959	215757	233259	206470	-11.5
May	118759	138708	142354	155132	135326	-12.8
June	113949	127458	140868	146413	135008	-7.8
July	148650	163488	199129	178758	171452	-4.1
August	161345	159642	189692	160456	154306	-3.8
September	107450	106619	146286	116421	118768	2.0
October	121834	132915	151782	120506	124868	3.6
November	155884	158212	192491	155142	182999	18.0
December	203947	196993	217299	211059	233486	10.6
TOTAL	1905682	2048572	2319334	2220567	2152221	-3.1

TOURIST ACCOMMODATION (Rooms)

Category	2003	2004	2005	2006	2007
2-Star	4046	4099	4110	3254	3027
3-Star	7556	7698	8674	9358	9470
4-Star	17006	18523	19061	19686	20146
5-Star	8076	8106	8458	10602	11527
Other*	7012	6755	6323	3911	2933
TOTAL	43696	45181	46626	46811	47103

Source: National Institute of Tourism (Intur), Cuba

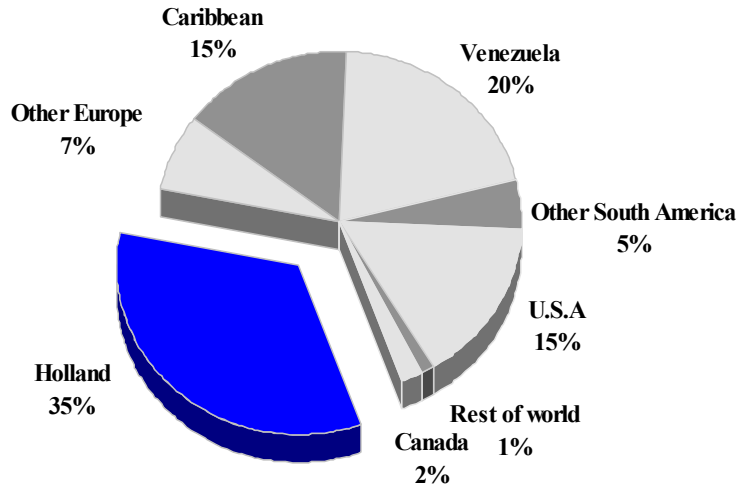
CURACAO

TOURISM HIGHLIGHTS FOR 2007

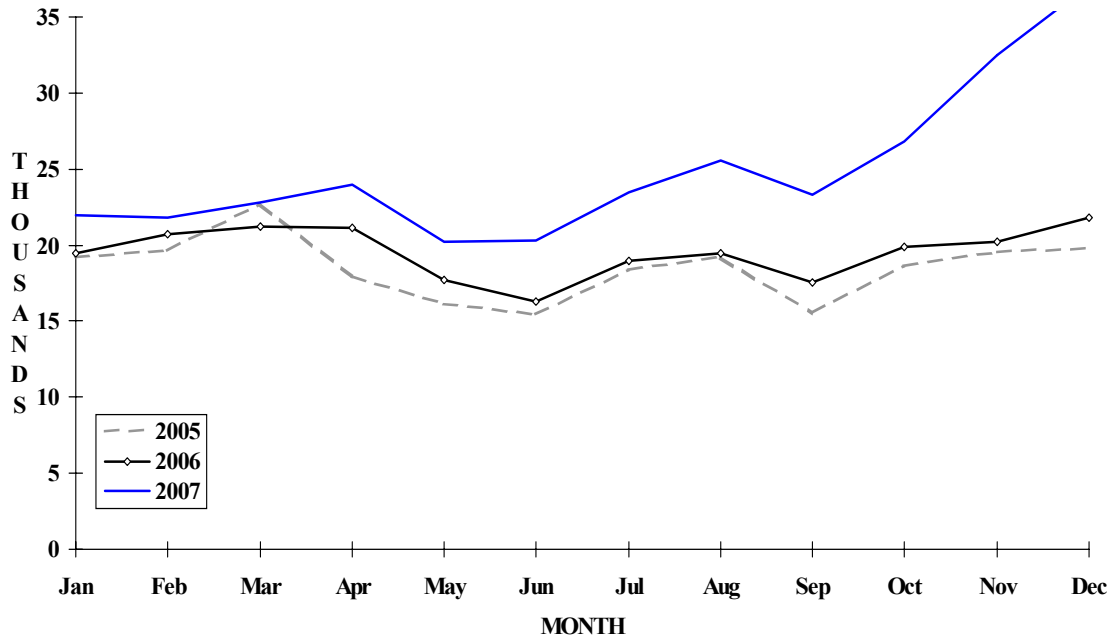
VISITOR ARRIVALS			
Tourist Arrivals ➔	299,784	Cruise Passengers	340,907
➔ <i>Summer</i>	69.8%	➔ <i>Summer</i>	48.3%
➔ <i>Winter</i>	30.2%	➔ <i>Winter</i>	51.7%
		Cruise Ship calls	255
VISITOR PROFILE			
Average Length of Stay (<i>nights</i>) ¹	9.2	Tourist Arrivals by Place of Stay	
Tourist Arrivals by Purpose of Visit		➔ <i>Hotels</i>	59.7%
➔ <i>Holiday</i>	93.9%	➔ <i>Guest Houses/Apartments</i>	3.5%
➔ <i>Business</i>	4.1%	➔ <i>Private</i>	26.3%
➔ <i>Other</i>	2.0%	➔ <i>Other</i>	10.5%
TOURISM AND OTHER RELATED ECONOMIC STATISTICS			
Total Expenditure (<i>US\$ millions</i>) ¹¹	\$283.7	Consumer Price Index (<i>% ch. 2006/'05</i>)	3.1%
Tourism Budget (<i>US\$ thousands</i>) ^{VI1}	\$9,343		
ACCOMMODATION STATISTICS		SOCIO-ECONOMIC STATISTICS	
Rooms ^{III}	3,444	Land Area (<i>square Kilometres</i>)	444
Room Occupancy Rates	81.5%	Population (<i>thousand mid year 2006</i>)	134.4

CURACAO

TOURIST ARRIVALS BY MAIN MARKETS 2007



MONTHLY TOURIST ARRIVALS



CURACAO

TOURIST ARRIVALS BY COUNTRY OF RESIDENCE

Country of Residence	2003	2004	2005	2006	2007	% Share 2007
United States	40019	43105	45563	47428	46212	15.4
Canada	3786	4101	5223	7423	6898	2.3
Holland	75999	73798	77879	85262	100429	33.5
Other Europe	15385	15954	17078	18975	21000	7.0
Dominican Republic	7009	6435	4639	3366	3231	1.1
Aruba	12561	13102	10702	12729	14483	4.8
Haiti	4836	2924	1832	1697	1730	0.6
Puerto Rico	1127	1188	963	1249	902	0.3
Other C'bean*	21798	21648	20030	18893	25372	8.5
Venezuela	25099	27639	24259	21446	60967	20.3
Other South America**	9559	8731	10168	12291	14526	4.8
Rest of World	4217	4814	3737	3630	4034	1.3
TOTAL	221395	223439	222073	234389	299784	100.0

*Excludes residents of Netherlands Antilles

**Includes Suriname from 1994-1995

MONTHLY TOURIST ARRIVALS

Month	2003	2004	2005	2006	2007	% Change 2007/06
January	17714	18539	19209	19479	21956	12.7
February	17869	19810	19628	20698	21789	5.3
March	17394	18930	22727	21251	22763	7.1
April	19467	21498	17930	21166	23972	13.3
May	15400	16223	16150	17675	20243	14.5
June	16011	15745	15441	16259	20289	24.8
July	20949	21446	18396	18940	23492	24.0
August	18742	20242	19215	19467	25565	31.3
September	17109	15815	15578	17556	23295	32.7
October	20909	18178	18589	19873	26801	34.9
November	19260	18352	19518	20191	32516	61.0
December	20571	18661	19692	21834	37103	69.9
TOTAL	221395	223439	222073	234389	299784	27.9

CRUISE PASSENGER ARRIVALS

Month	2003	2004	2005	2006	2007	% Change 2007/06
January	48617	27218	45543	46342	60009	29.5
February	35433	20177	31775	36089	39430	9.3
March	41179	31174	34933	47695	52276	9.6
April	31492	15739	21107	23810	24677	3.6
May	10760	3794	9674	13509	17374	28.6
June	7721	2717	8293	7082	10560	49.1
July	10723	7954	8322	7621	11804	54.9
August	7242	7680	10509	11816	11954	1.2
September	7605	6679	7279	7642	11349	48.5
October	16917	11725	16182	22602	16552	-26.8
November	29287	34762	44369	48971	37072	-24.3
December	32402	49766	38231	48372	47850	-1.1
TOTAL	279378	219385	276217	321551	340907	6.0

Number of Calls 184

TOURIST ACCOMMODATION (Rooms)

Type of Accommodation	2000	2001	2002	2003	2004
Hotels	1994	2367	n.a	n.a	n.a
Apartments	400	261	n.a	n.a	n.a
Villas/Cottages	447	554	n.a	n.a	n.a
Guest Houses	100	21	n.a	n.a	n.a
Other			n.a	n.a	n.a
TOTAL	2941	3203	3226	3369	3444

Source: Curacao Tourism Development Bureau

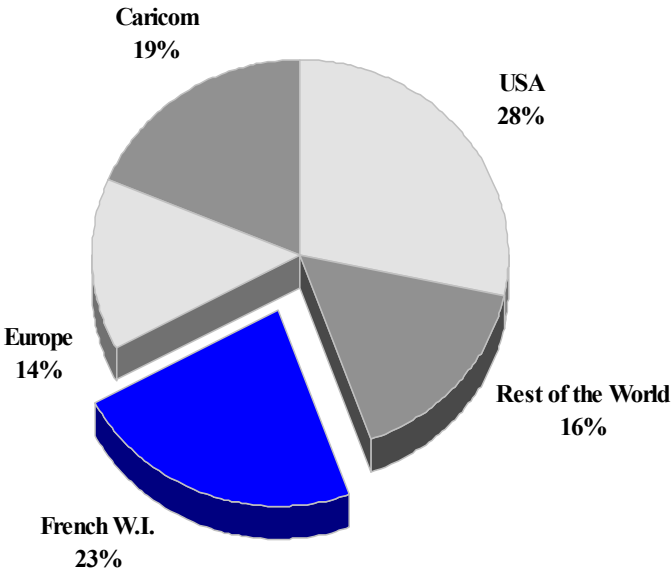
DOMINICA

TOURISM HIGHLIGHTS FOR 2007

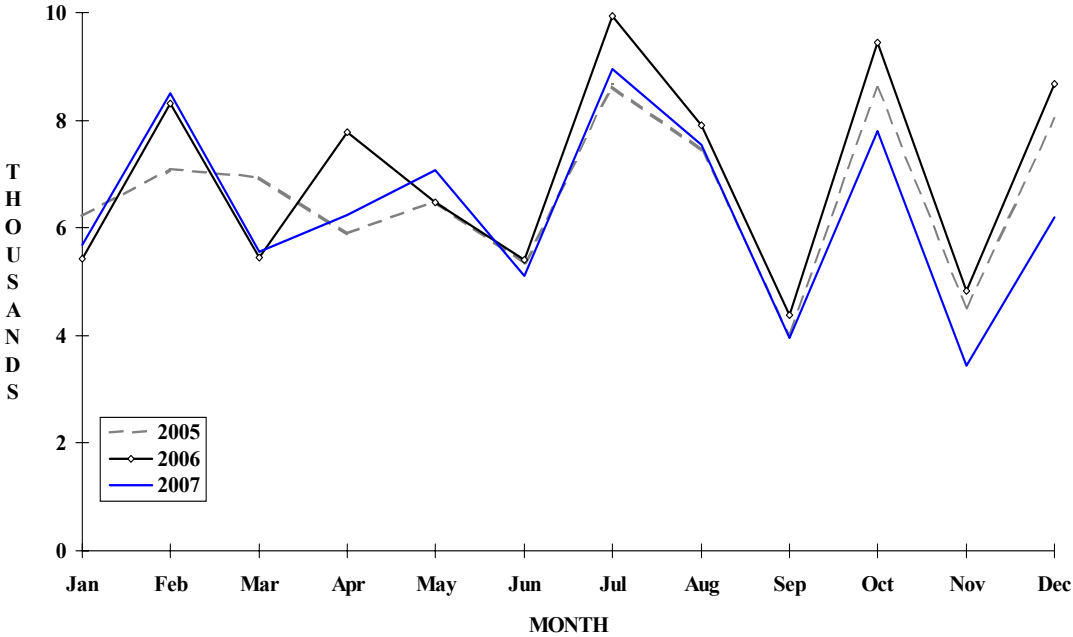
VISITOR ARRIVALS			
Tourist Arrivals ➔	76,070	Cruise Passengers	354,515
➔ <i>Summer</i>	65.8%	➔ <i>Summer</i>	51.0%
➔ <i>Winter</i>	34.2%	➔ <i>Winter</i>	49.0%
		Cruise Ship Calls	252
VISITOR PROFILE			
Average Length of Stay (<i>nights</i>)	12.0	Tourist Arrivals by Place of Stay	
Tourist Arrivals by Purpose of Visit		➔ <i>Hotels</i>	22.0%
➔ <i>Holiday</i>	78.8%	➔ <i>Guest Houses/Apartments</i>	9.5%
➔ <i>Business</i>	11.3%	➔ <i>Private</i>	51.7%
➔ <i>Other</i>	9.8%	➔ <i>Other</i>	16.8%
TOURISM AND OTHER RELATED ECONOMIC STATISTICS			
Total Expenditure (<i>US\$ millions</i>) ^I	\$71.7	GDP at Factor Cost (<i>US\$ millions</i>) ^{II}	\$154.5
Tourism Budget (<i>US\$ thousands</i>) ^{VII bf}	\$1,568	Consumer Price Index (% ch. 2004/'03)	2.5%
Hotel and Restaurant contribution to GDP ^{IV}	2.7%		
ACCOMMODATION STATISTICS		SOCIO-ECONOMIC STATISTICS	
Rooms	901	Land Area (<i>square Kilometres</i>)	750
		Population (<i>thousand mid year 2006</i>)	70.9

DOMINICA

**TOURIST ARRIVALS BY MAIN MARKETS
2007**



MONTHLY TOURIST ARRIVALS



TOURIST ARRIVALS BY COUNTRY OF RESIDENCE

Country of Residence						% Share	
	2003	2004	2005	2006	2007	2007	
U.S.A	15638	17574	18492	22011	21423	28.2	
Canada	1968	1724	1977	2552	2604	3.4	
United Kingdom	6062	6035	6117	6503	6193	8.1	
France	2532	1866	1853	2239	2398	3.2	
Other Europe	2178	2307	2288	2561	2122	2.8	
OECS	10504	10347	10767	10899	9574	12.6	
Other CARICOM	4670	4962	4843	6243	4602	6.1	
French W.I	17695	20420	18517	19475	17380	22.8	
Other Countries	11943	14852	14403	11558	9774	12.8	
TOTAL	73190	80087	79257	84041	76070	100.0	

MONTHLY TOURISTS ARRIVALS

Month						% Change	
	2003	2004	2005	2006	2007	2007/06	
January	5118	5743	6208	5431	5677	4.5	
February	6222	7175	7087	8302	8509	2.5	
March	6324	4652	6938	5456	5565	2.0	
April	6038	6726	5903	7778	6246	-19.7	
May	5519	6751	6500	6484	7082	9.2	
June	5335	5479	5353	5400	5097	-5.6	
July	8149	9073	8635	9935	8957	-9.8	
August	7089	8227	7466	7899	7538	-4.6	
September	4083	4475	4029	4387	3952	-9.9	
October	7972	9127	8605	9451	7798	-17.5	
November	4605	4962	4523	4838	3445	-28.8	
December	6736	7697	8010	8680	6204	-28.5	
TOTAL	73190	80087	79257	84041	76070	-9.5	

CRUISE PASSENGER ARRIVALS

Month	2003	2004	2005	2006	% Change	
					2007	2007/06
January	29152	47316	40446	56038	53377	-4.7
February	23093	47537	30788	52536	44974	-14.4
March	24276	52543	37046	42020	42892	2.1
April	15860	39533	28350	32924	32434	-1.5
May	3594	13785	16709	15375	13539	-11.9
June	130	15414	12501	13201	12712	-3.7
July	185	12579	12710	13410	16238	21.1
August	72	15229	12341	15979	9527	-40.4
September	-	17665	3134	12361	12164	-1.6
October	13956	23226	20583	27337	24526	-10.3
November	26310	47109	36351	50291	40932	-18.6
December	40416	51678	50335	48171	51200	6.3
TOTAL	177044	383614	301294	379643	354515	-6.6

Number of Calls	206	299	234	314	252
------------------------	-----	-----	-----	-----	-----

TOTAL VISITOR ARRIVALS BY CATEGORY

Category	2003	2004	2005	2006	2007
Tourists	73190	80087	79257	84041	76070
Cruise Passengers	177044	383614	301511	379643	354515
Other same-day visitors	3928	2577	650	926	1152
TOTAL	254162	466278	381418	464610	431737

TOURIST ACCOMMODATION (Rooms)

Rooms	2003	2004	2005	2006	2007
TOTAL	931	791	787	818	901

Sources: Division of Tourism, National Development Corporation, Department of Statistics- Dominica